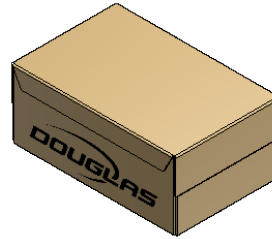
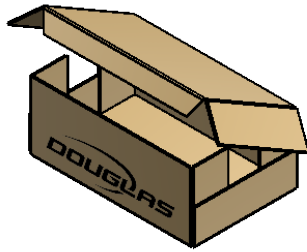
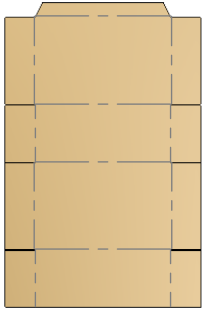


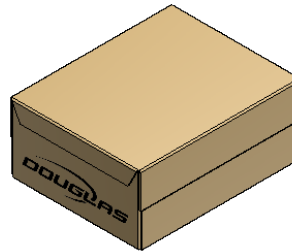
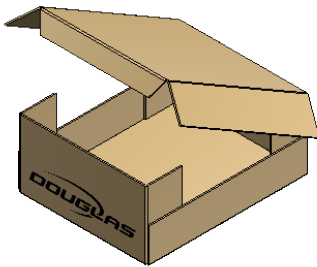
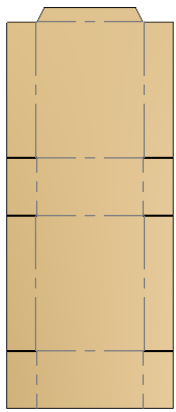
WACP  
REGULAR SLOTTED CASE (RSC)



REGULAR SLOTTED  
CASE (RSC)

END LOAD

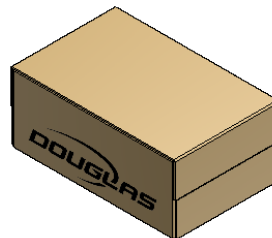
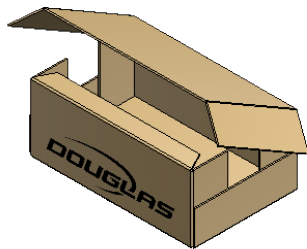
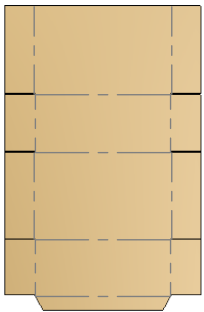
MFG FLAP ON  
TOP PANEL



REGULAR SLOTTED  
CASE (RSC)

SIDE LOAD

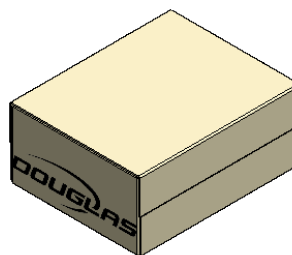
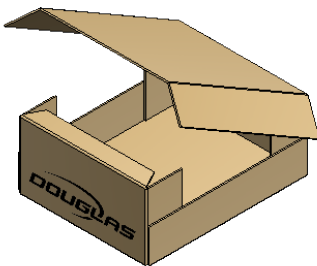
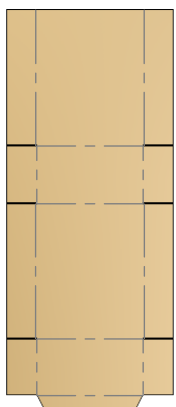
MFG FLAP ON  
TOP PANEL



REGULAR SLOTTED  
CASE (RSC)

END LOAD

MFG FLAP ON  
SIDE PANEL

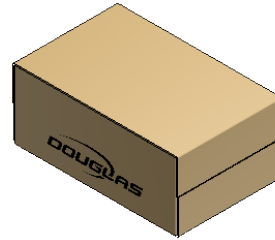
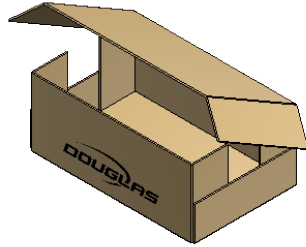
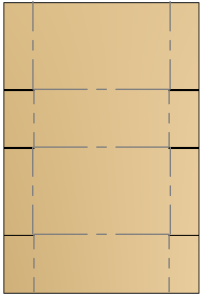


REGULAR SLOTTED  
CASE (RSC)

SIDE LOAD

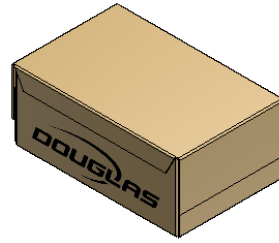
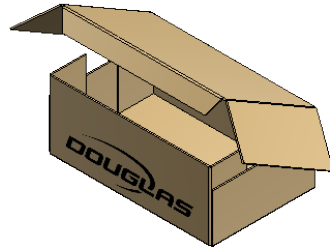
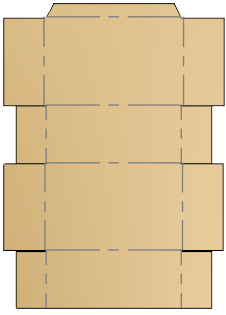
MFG FLAP ON  
END PANEL

WACP  
REGULAR SLOTTED CASE (RSC)



RSC STYLE  
END FLAPS  
NO MFG FLAP

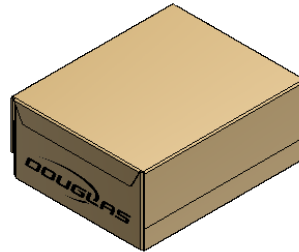
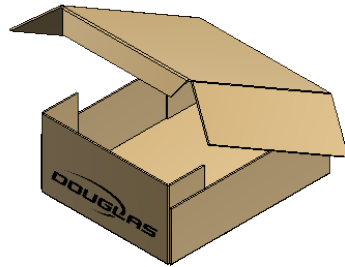
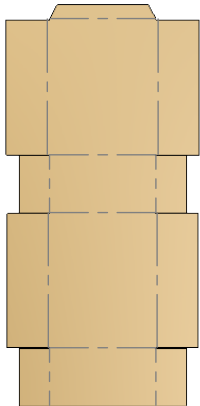
WACP  
PARTIAL OVERLAPPED (POL)



PARTIAL OVERLAPPED  
(POL)

END LOAD

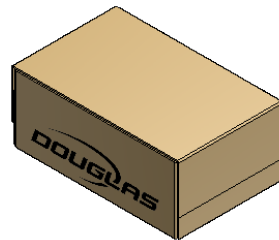
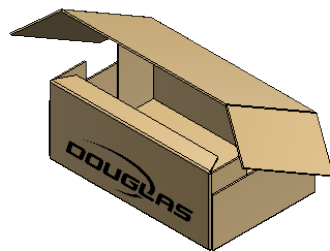
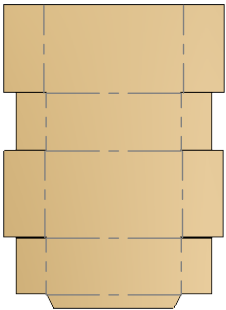
MFG FLAP ON  
TOP PANEL



PARTIAL OVERLAPPED  
(POL)

SIDE LOAD

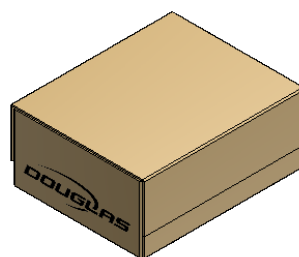
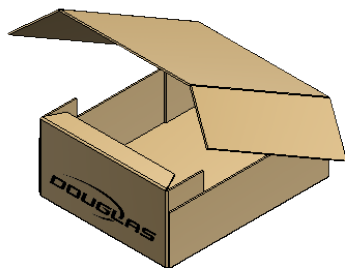
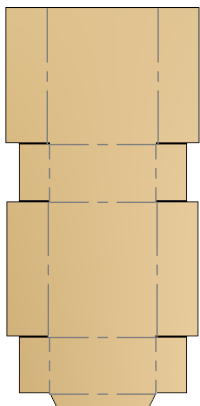
MFG FLAP ON  
TOP PANEL



PARTIAL OVERLAPPED  
(POL)

END LOAD

MFG FLAP ON  
SIDE PANEL

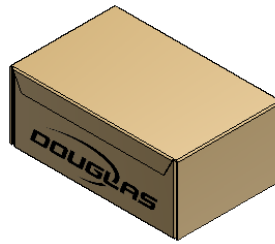
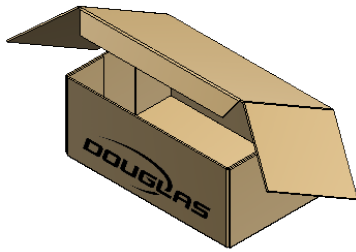
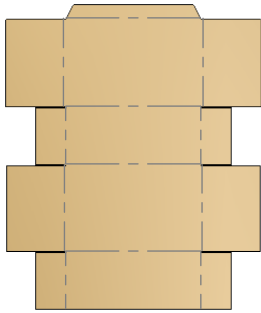


PARTIAL OVERLAPPED  
(POL)

SIDE LOAD

MFG FLAP ON  
END PANEL

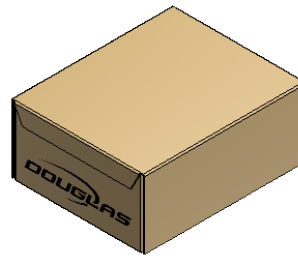
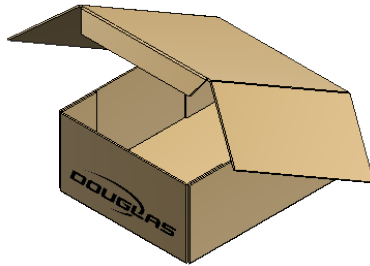
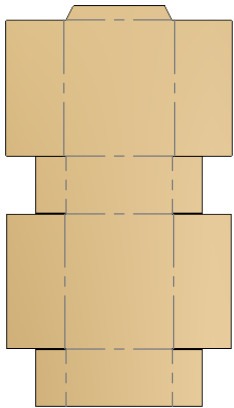
WACP  
FULLY OVERLAPPED (FOL)



FULLY OVERLAPPED  
(FOL)

END LOAD

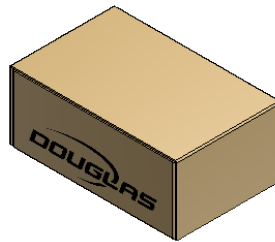
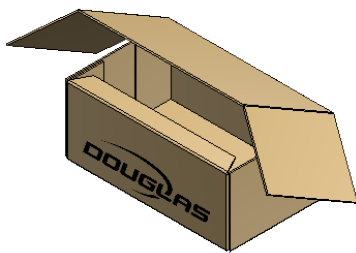
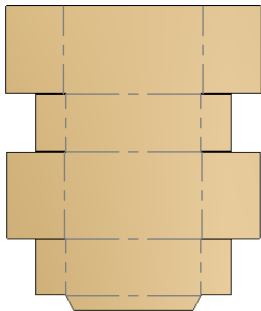
MFG FLAP ON  
TOP PANEL



FULLY OVERLAPPED  
(FOL)

SIDE LOAD

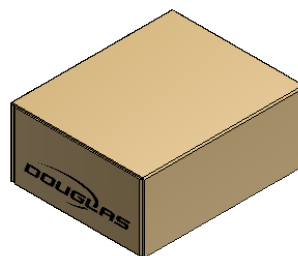
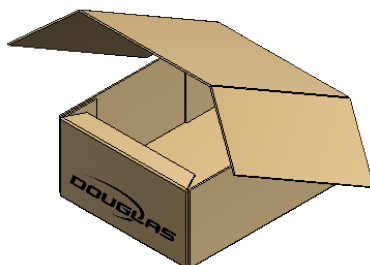
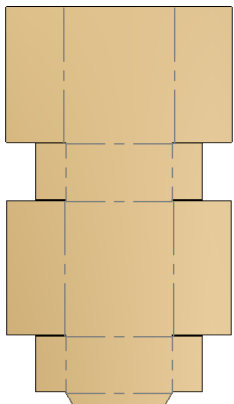
MFG FLAP ON  
TOP PANEL



FULLY OVERLAPPED  
(FOL)

END LOAD

MFG FLAP ON  
SIDE PANEL

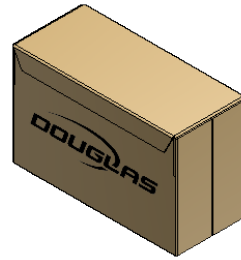
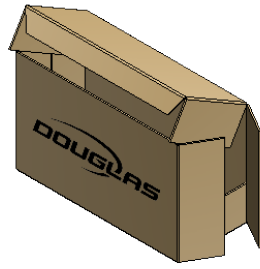
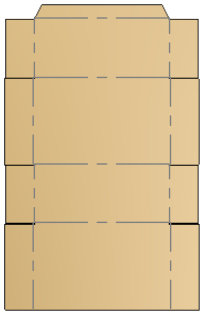


FULLY OVERLAPPED  
(FOL)

SIDE LOAD

MFG FLAP ON  
END PANEL

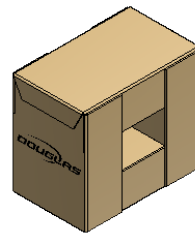
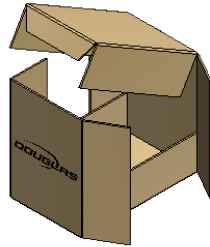
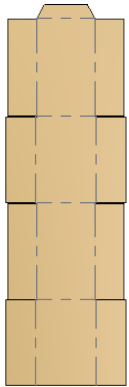
WACP  
REGULAR SLOTTED CASE (RSC)  
WITH REVERSE FLAP FOLDING



REGULAR SLOTTED  
CASE (RSC)  
WITH REVERSE  
FLAP FOLDING

END LOAD

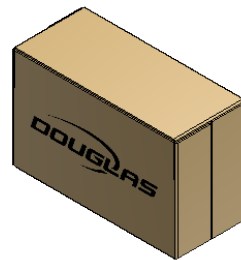
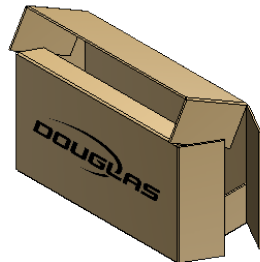
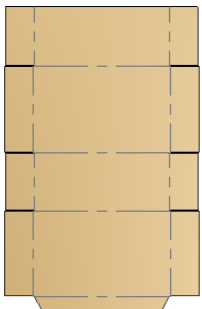
MFG FLAP ON  
TOP PANEL



REGULAR SLOTTED  
CASE (RSC)  
WITH REVERSE  
FLAP FOLDING

SIDE LOAD

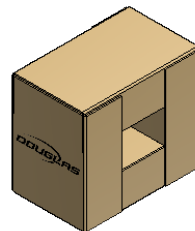
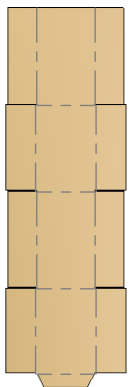
MFG FLAP ON  
TOP PANEL



REGULAR SLOTTED  
CASE (RSC)  
WITH REVERSE  
FLAP FOLDING

END LOAD

MFG FLAP ON  
SIDE PANEL

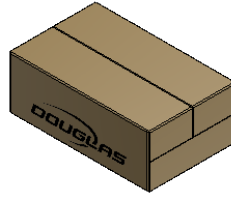
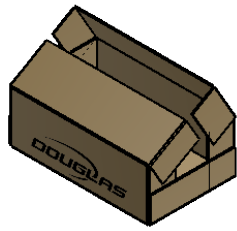
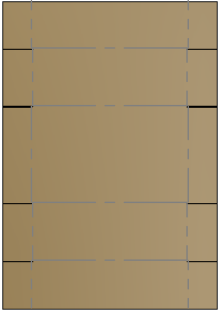


REGULAR SLOTTED  
CASE (RSC)  
WITH REVERSE  
FLAP FOLDING

SIDE LOAD

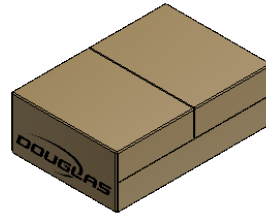
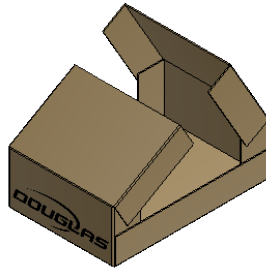
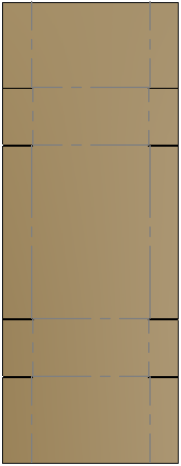
MFG FLAP ON  
END PANEL

WACP  
HARNESS STYLE  
REGULAR SLOTTED CASE (RSC) &  
PARTIAL OVERLAPPED (POL)



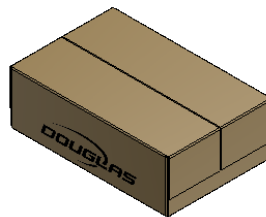
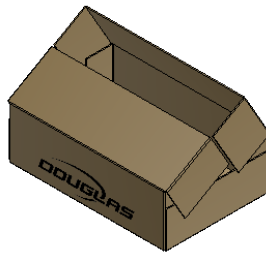
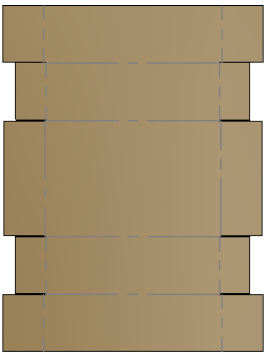
HARNESS STYLE  
REGULAR SLOTTED  
CASE (RSC)

END LOAD



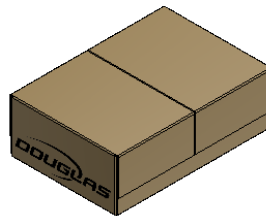
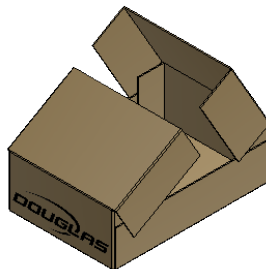
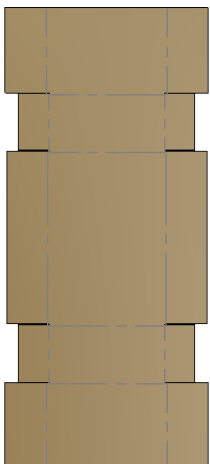
HARNESS STYLE  
REGULAR SLOTTED  
CASE (RSC)

END LOAD



HARNESS STYLE  
PARTIAL OVERLAPPED  
(POL)

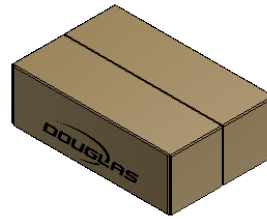
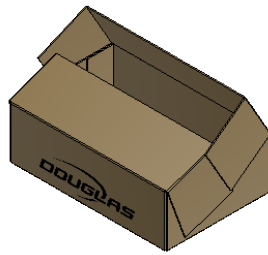
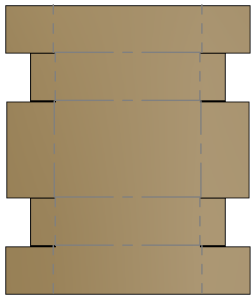
END LOAD



HARNESS STYLE  
PARTIAL OVERLAPPED  
(POL)

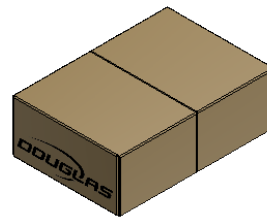
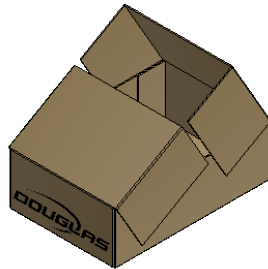
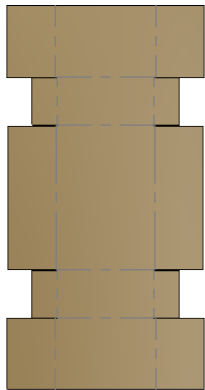
SIDE LOAD

WACP  
HARNESS STYLE  
FULLY OVERLAPPED (FOL) &  
REVERSE FLAP FOLDING



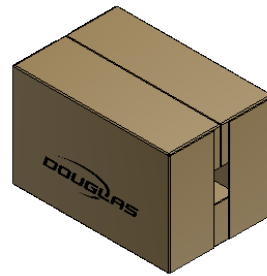
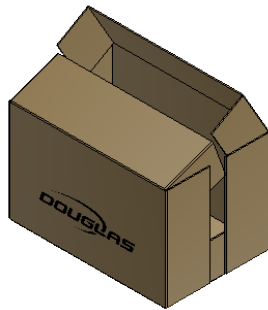
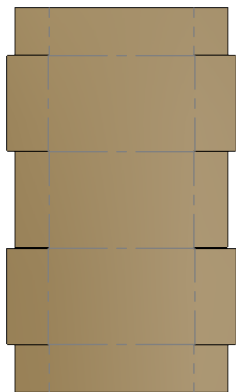
HARNESS STYLE  
FULLY OVERLAPPED  
(FOL)

END LOAD



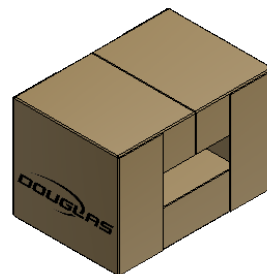
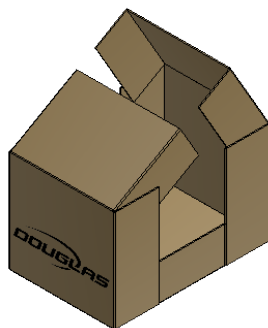
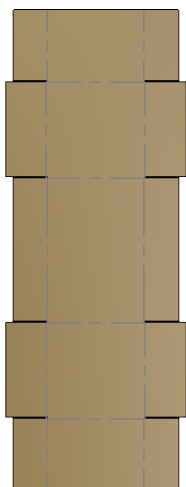
HARNESS STYLE  
FULLY OVERLAPPED  
(FOL)

SIDE LOAD



HARNESS STYLE  
WITH REVERSE  
FLAP FOLDING

END LOAD

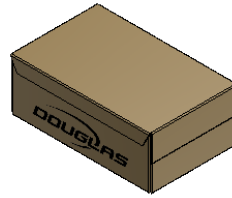
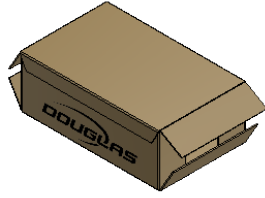
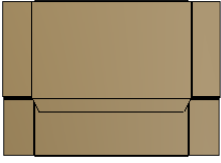


HARNESS STYLE  
WITH REVERSE  
FLAP FOLDING

SIDE LOAD

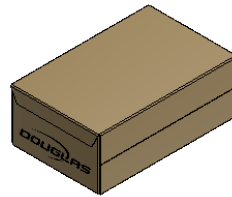
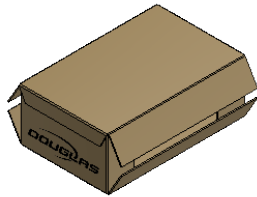
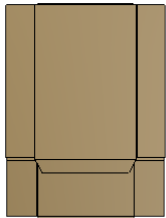
KDCP

REGULAR SLOTTED CASE (RSC)  
& PARTIAL OVERLAPPED (POL)



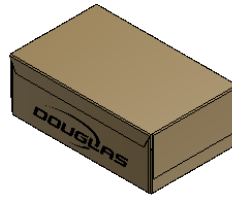
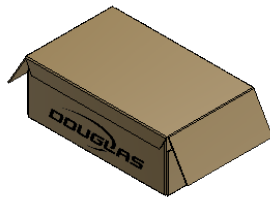
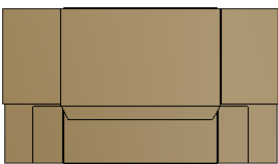
REGULAR SLOTTED  
CASE (RSC)

END LOAD



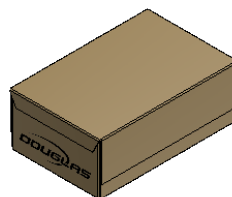
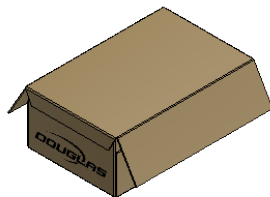
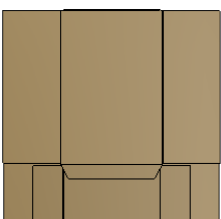
REGULAR SLOTTED  
CASE (RSC)

SIDE LOAD



PARTIAL OVERLAPPED  
CASE (POL)

END LOAD

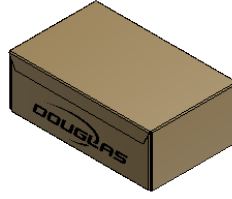
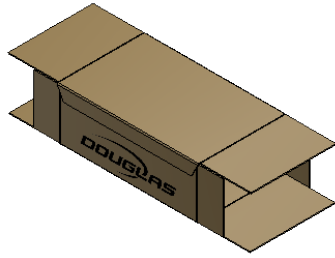
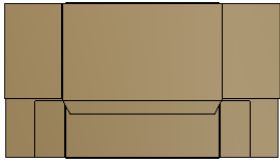


PARTIAL OVERLAPPED  
CASE (POL)

SIDE LOAD

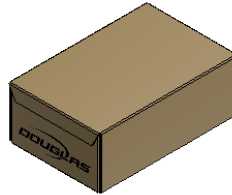
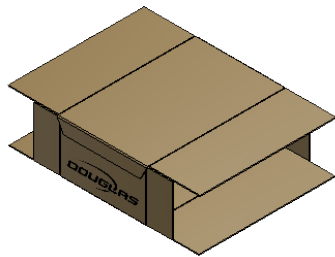
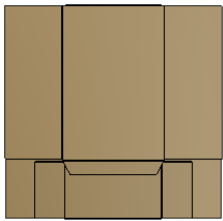


KDCP  
FULLY OVERLAPPED (FOL)  
REVERSE FLAP FOLDING



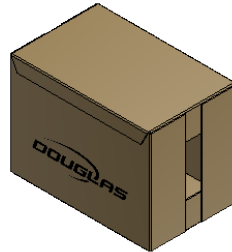
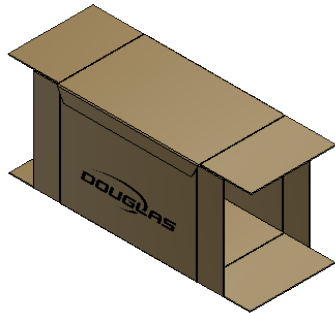
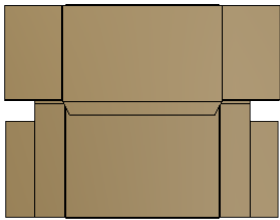
FULLY OVERLAPPED  
CASE (FOL)

END LOAD



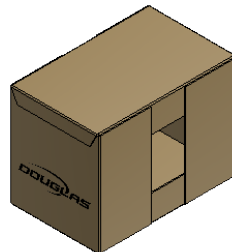
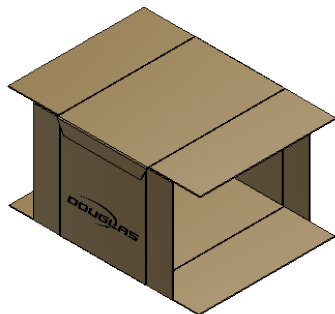
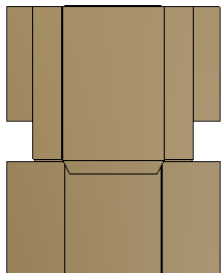
FULLY OVERLAPPED  
CASE (FOL)

SIDE LOAD



REGULAR SLOTTED  
CASE (RSC)  
WITH REVERSE  
FLAP FOLDING

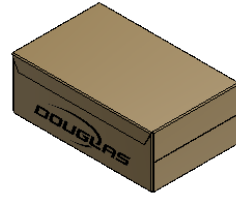
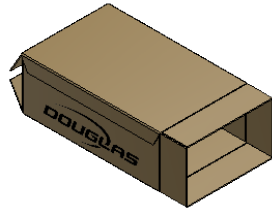
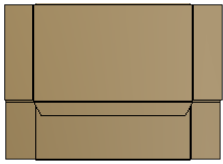
END LOAD



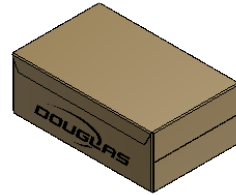
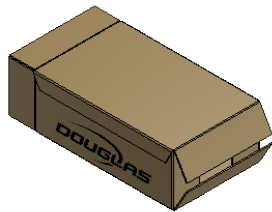
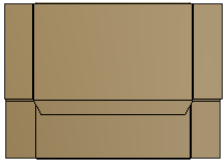
REGULAR SLOTTED  
CASE (RSC)  
WITH REVERSE  
FLAP FOLDING

SIDE LOAD

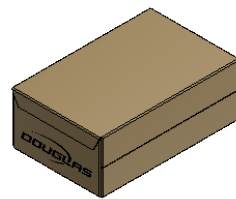
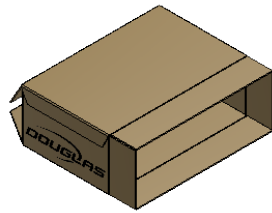
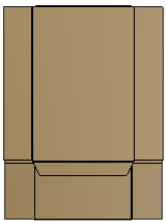
COBS (KD)  
REGULAR SLOTTED CASE (RSC)



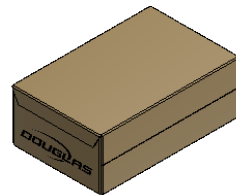
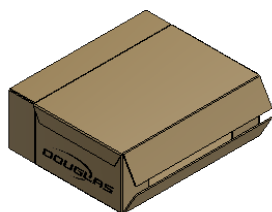
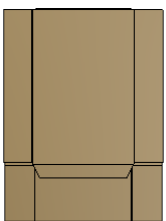
REGULAR SLOTTED  
CASE (RSC)  
FOR LH MACHINE  
END LOAD



REGULAR SLOTTED  
CASE (RSC)  
FOR RH MACHINE  
END LOAD

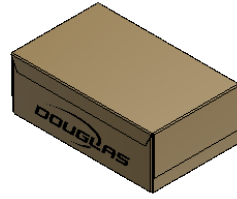
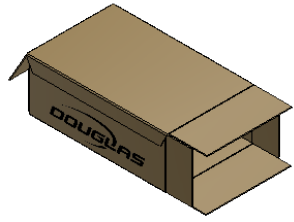
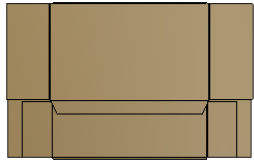


REGULAR SLOTTED  
CASE (RSC)  
FOR LH MACHINE  
SIDE LOAD

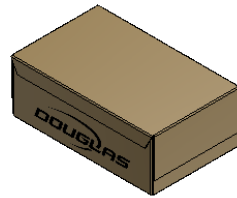
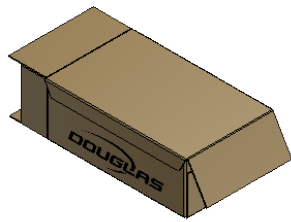
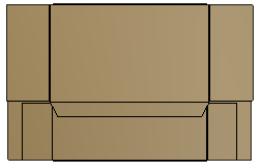


REGULAR SLOTTED  
CASE (RSC)  
FOR RH MACHINE  
SIDE LOAD

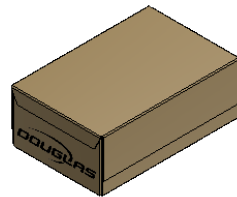
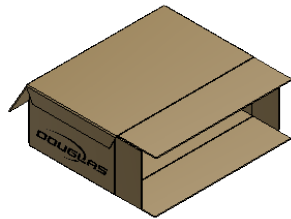
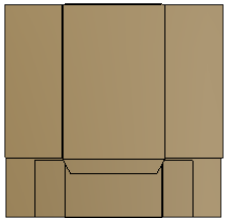
COBS (KD)  
PARTIAL OVERLAPPED (POL)



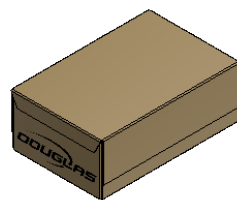
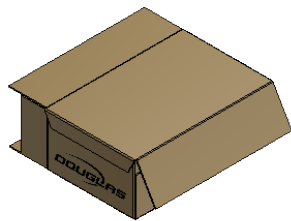
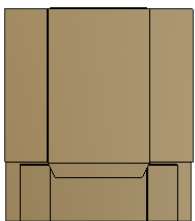
PARTIAL OVERLAPPED  
CASE (POL)  
FOR LH MACHINE  
END LOAD



PARTIAL OVERLAPPED  
CASE (POL)  
FOR RH MACHINE  
END LOAD

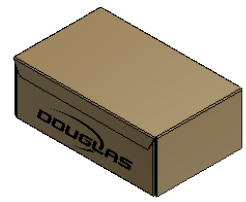
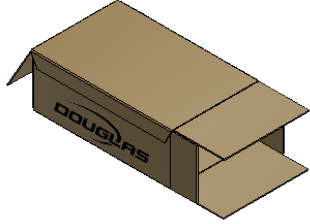
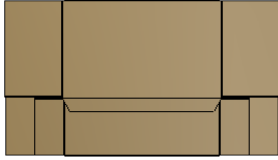


PARTIAL OVERLAPPED  
CASE (POL)  
FOR LH MACHINE  
SIDE LOAD

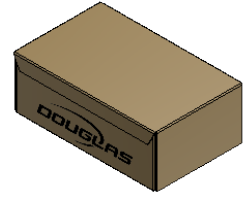
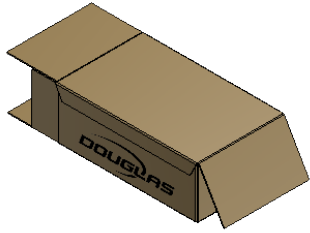
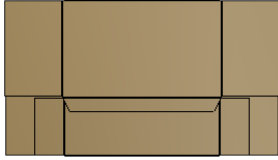


PARTIAL OVERLAPPED  
CASE (POL)  
FOR RH MACHINE  
SIDE LOAD

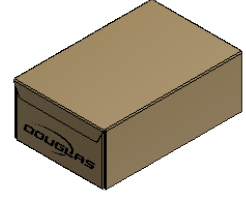
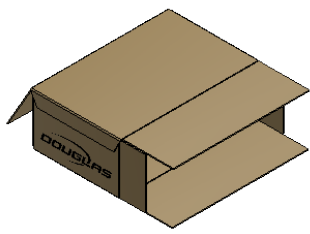
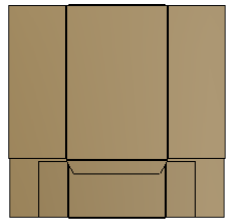
COBS  
FULLY OVERLAPPED (FOL)



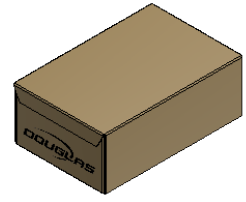
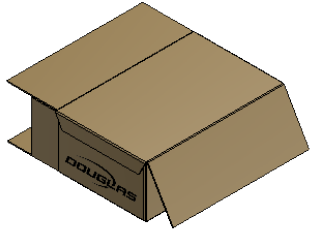
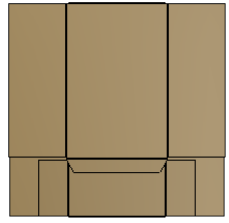
FULLY OVERLAPPED  
CASE (FOL)  
FOR LH MACHINE  
END LOAD



FULLY OVERLAPPED  
CASE (FOL)  
FOR RH MACHINE  
END LOAD

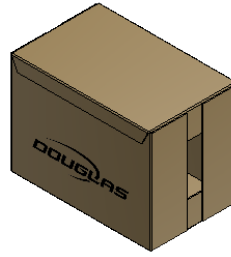
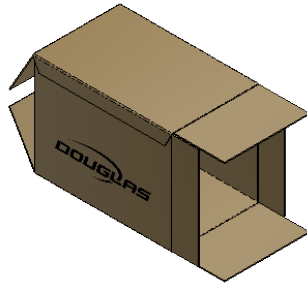
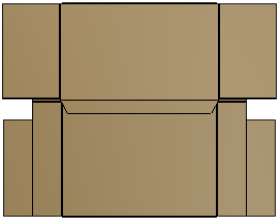


FULLY OVERLAPPED  
CASE (FOL)  
FOR LH MACHINE  
SIDE LOAD



FULLY OVERLAPPED  
CASE (FOL)  
FOR RH MACHINE  
SIDE LOAD

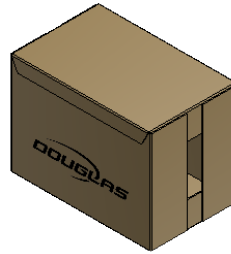
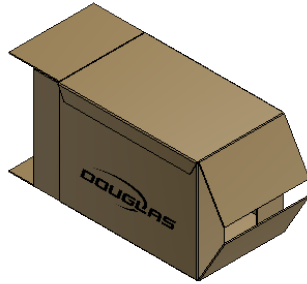
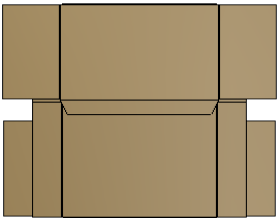
COBS  
REGULAR SLOTTED CASE (RSC)  
WITH REVERSE FLAP FOLDING



REGULAR SLOTTED  
CASE (RSC)  
WITH REVERSE  
FLAP FOLDING

FOR LH MACHINE

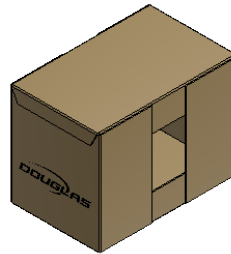
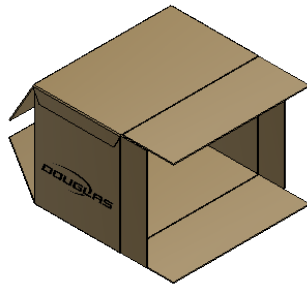
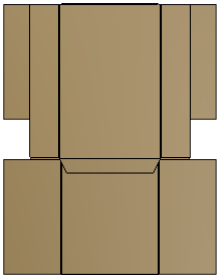
END LOAD



REGULAR SLOTTED  
CASE (RSC)  
WITH REVERSE  
FLAP FOLDING

FOR RH MACHINE

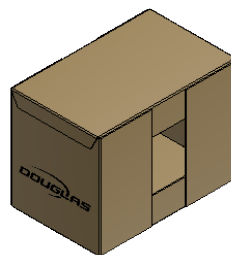
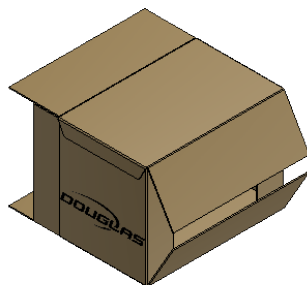
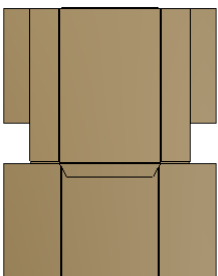
END LOAD



REGULAR SLOTTED  
CASE (RSC)  
WITH REVERSE  
FLAP FOLDING

FOR LH MACHINE

SIDE LOAD

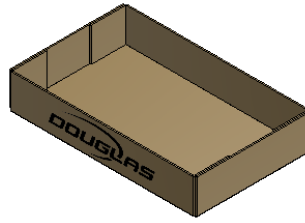
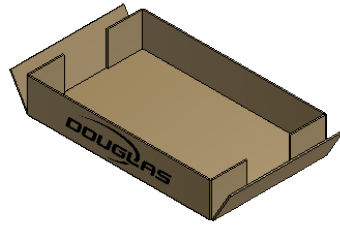
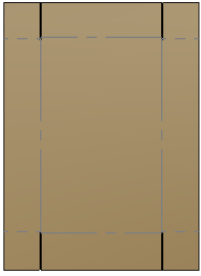


REGULAR SLOTTED  
CASE (RSC)  
WITH REVERSE  
FLAP FOLDING

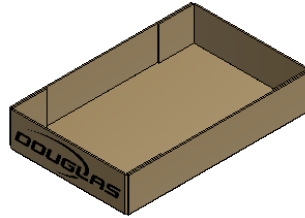
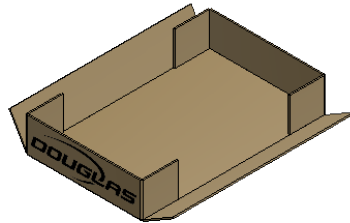
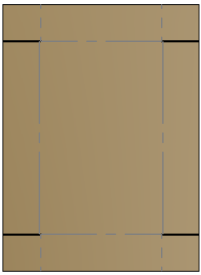
FOR rH MACHINE

SIDE LOAD

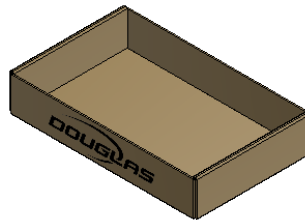
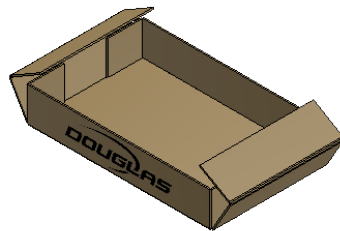
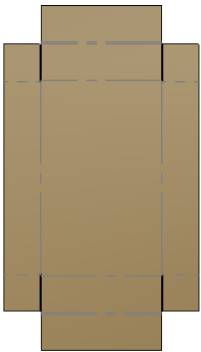
TRAY  
STANDARD & ROLLED END



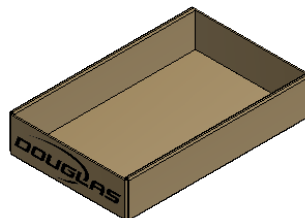
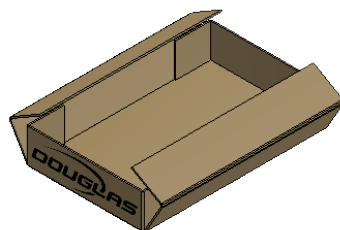
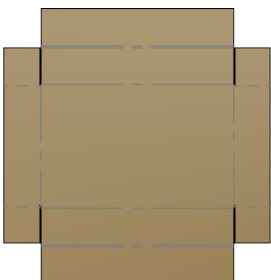
END SLOTTED  
TRAY



SIDE SLOTTED  
TRAY

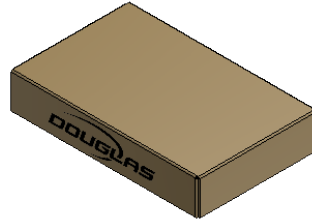
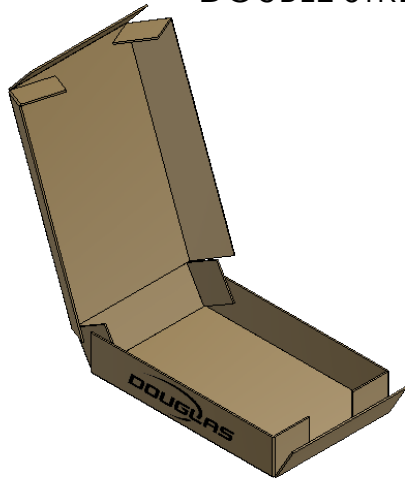
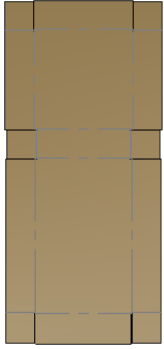


END SLOTTED  
ROLLED END  
TRAY

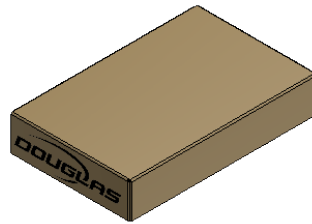
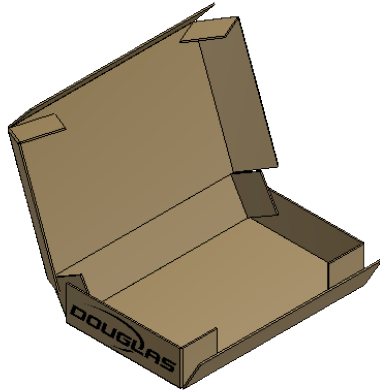
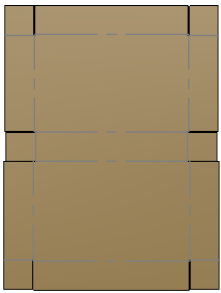


SIDE SLOTTED  
ROLLED END  
TRAY

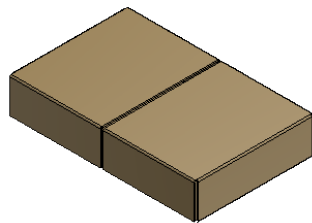
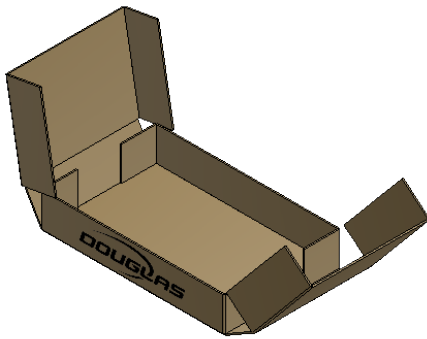
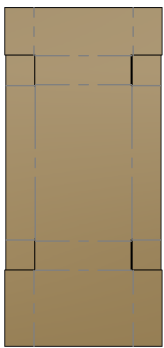
TRAY  
ONE PIECE CLAMSHELL &  
DOUBLE STRENGTH TRAY



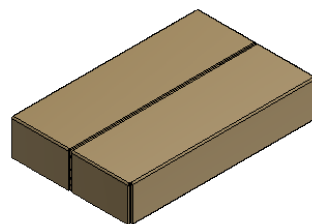
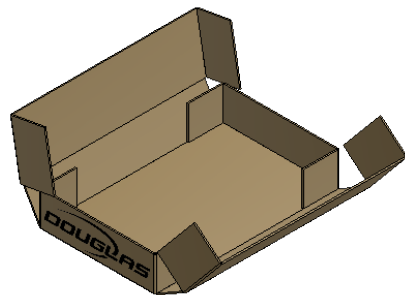
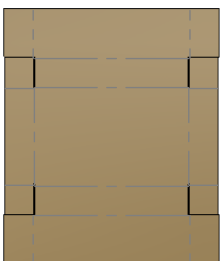
ONE PIECE  
CLAMSHELL  
TRAY  
END HINGE



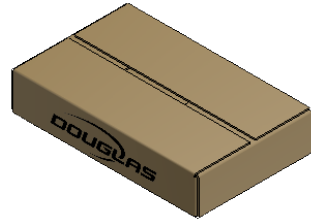
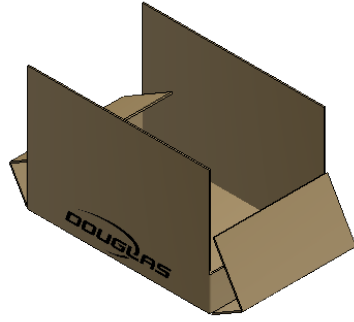
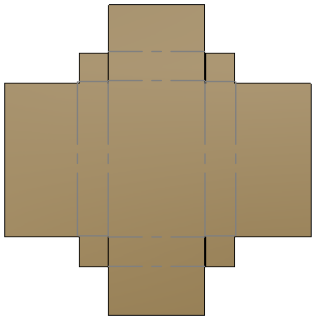
ONE PIECE  
CLAMSHELL  
TRAY  
SIDE HINGE



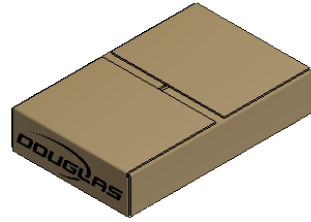
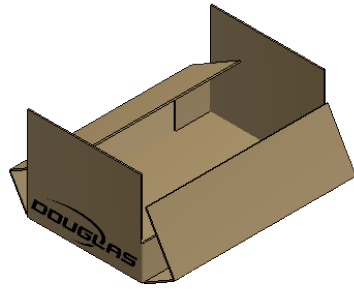
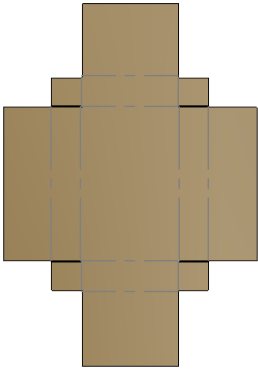
DOUBLE  
STRENGTH  
TRAY  
END SLOTTED



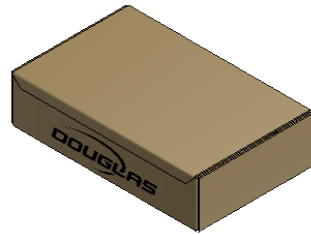
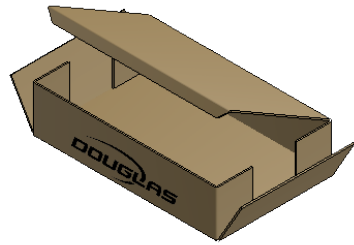
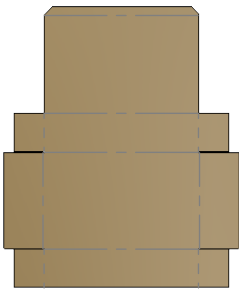
DOUBLE  
STRENGTH  
TRAY  
SIDE SLOTTED



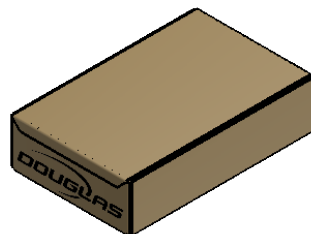
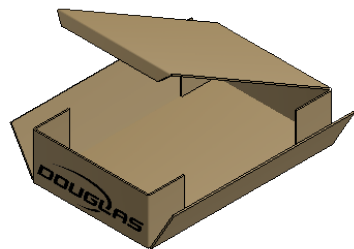
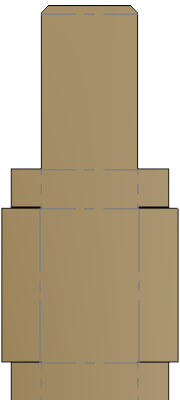
TOP LOADING TRAY  
END SLOTTED



TOP LOADING TRAY  
SIDE SLOTTED



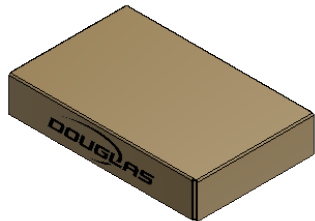
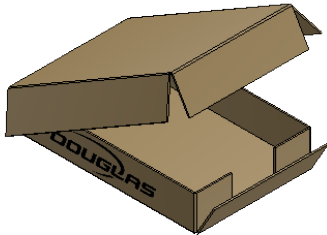
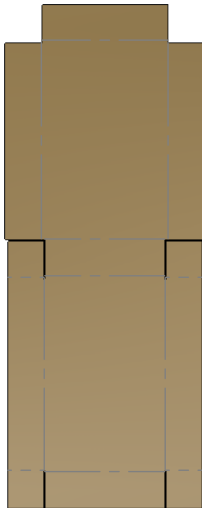
ONE PIECE LIDDED TRAY  
END SLOT



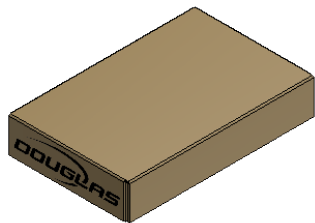
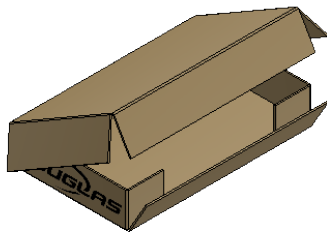
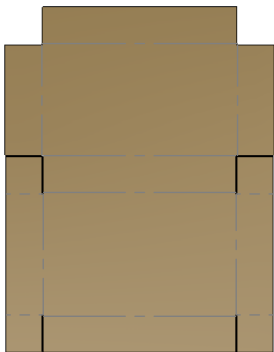
ONE PIECE LIDDED TRAY  
SIDE SLOT



WACP  
TRAY WRAP  
FULLY OVERLAPPED (FOL)

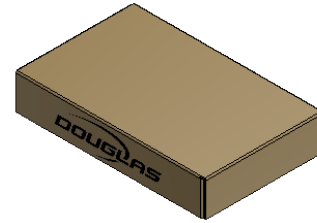
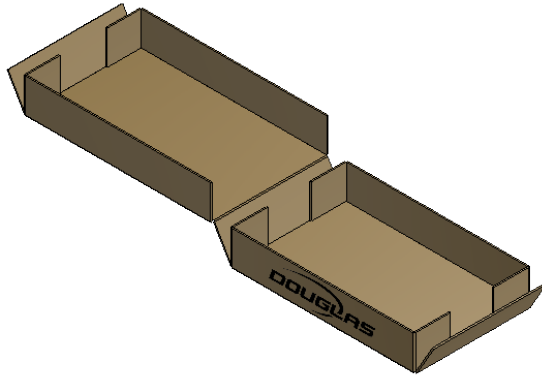
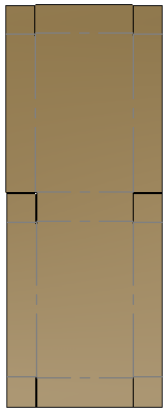


TRAY WRAP  
FULLY OVERLAPPED  
(FOL)  
END LOAD

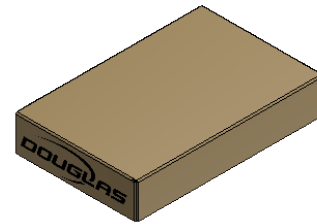
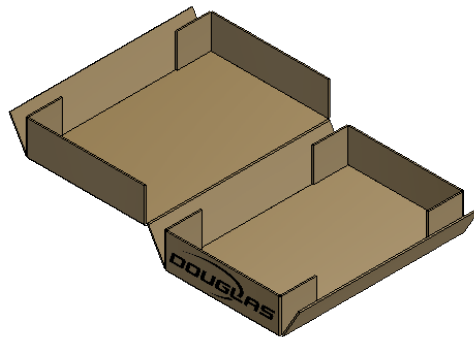
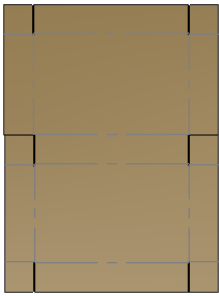


TRAY WRAP  
FULLY OVERLAPPED  
(FOL)  
SIDE LOAD

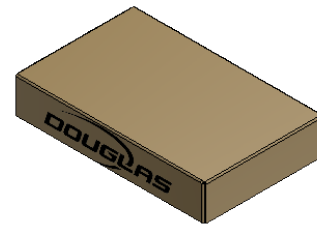
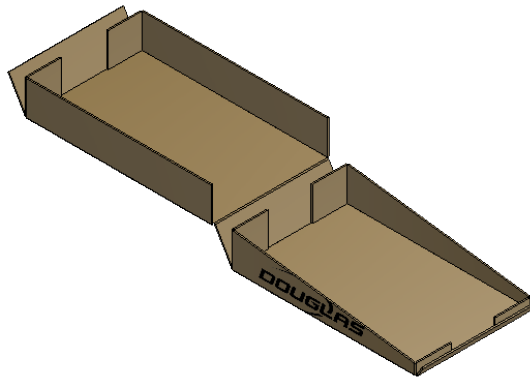
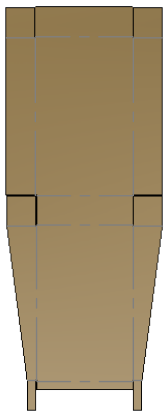
TRAY  
6 CORNER TRAY &  
DISPLAY TRAY



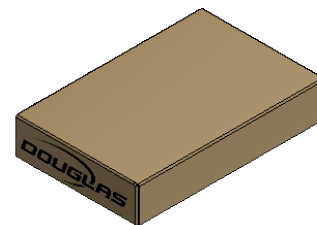
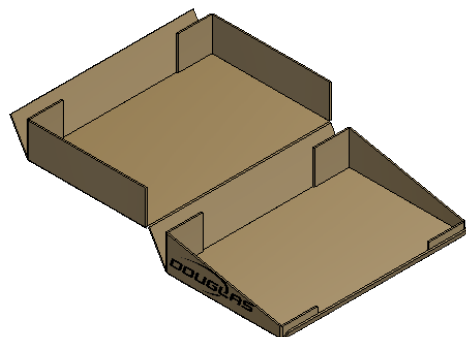
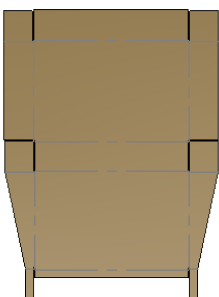
6 CORNER  
TRAY  
END HINGE



6 CORNER  
TRAY  
SIDE HINGE



6 CORNER  
DISPLAY TRAY  
END HINGE



6 CORNER  
DISPLAY TRAY  
SIDE HINGE